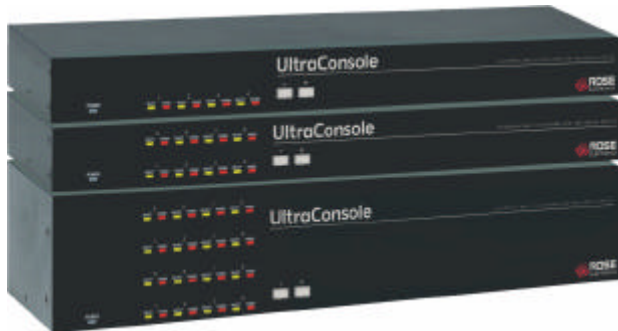


# UltraConsole



## Single user KVM switch

Compatible with PCs, Sun, Unix, Linux, and USB

Supports serial devices such as routers and emulates VT100/220 terminals

Plug-in expansion cards allows the system to easily be expanded as the system grows

An expanded system can connect up to 1,000 computers to a console user station

## Features and Benefits

- Control PCs, Sun, and serial devices from a single console station
- Powerful and expandable, yet low cost
- Plug-in expansion cards and the units modular design makes it simple to install, expand, and maintain
- Uses UltraCable for superior cable management with lengths up to 100 feet (30m)
- Video resolution up to 1600 x 1280
- On-screen display (OSD) informs you of connection status between units in an expanded system
- Multi-lingual OSD – English, French, German, Spanish, Italian, Portuguese
- Pre-configuration feature allows installation without powering down most servers
- Security system with user ID, password and profile prevents unauthorized configuration and controls computer access
- Status screen displays inter-unit connections, communication, computer power, and other system information
- Front panel indicators show what port is selected and features push-button computer selection
- Flash memory with free upgrades of firmware maintains compatibility with the latest devices and features

## The UltraConsole™ Advantage . . .

The UltraConsole series represents the latest in KVM switching technology at affordable prices. The UltraConsole series allows for a central user station to connect to four, eight, or sixteen computers per chassis, expandable to as many as 1,000 computers or servers.

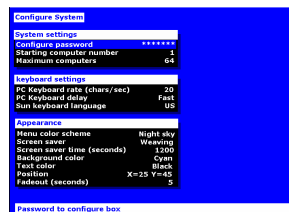
The UltraConsole series is available in 1 x 4, 1 x 8, and 1 x 16 models. Units easily connect together with bus cables to make a seamless and truly scalable KVM switch.

The advanced distributed design of the UltraConsole uses networking communication technology to reduce cost, eliminate single points of failure, and increase reliability.

The on-screen display makes configuring, monitoring, and installation easy with on-screen instructions and help. Use the on-screen display to name computers, select computers, view connections, assign users, configure system security, and other features.

The UltraConsole provides serial support to access computers, routers, Ethernet hubs, Unix devices and more. It can perform as a 'VT100/220' terminal emulator with a four-page scroll buffer.

Local monitor connection, security, flash memory, system status and many other features ensure that the UltraConsole will streamline your data center or server room and provide a central access point for your system.



Configure System menu

## Typical Application



**Models** The UltraConsole KVM switch is available in several models. They have fixed port configuration and plug-in expansion cards. The UC1 models connect a user to 4, 8, or 16 computers; Adding additional units can expand the system to as many as 1,000 computers.

**Cables** Rose's UltraCable streamlines cable connections to UltraConsole, simplifying cable management and improving system reliability. Order the computer or user cables by the computer's connector style and desired length. We stock a large variety of cable types in lengths up to 100 feet. Please specify standard resolution (1024x768 or less) or high resolution (greater than 1024x768). Expansion cables are ordered by length. You need one expansion cable to connect one unit to another.

**Installation** UltraConsole is easy to install. You simply connect your computers and a KVM to the UltraConsole ports. Configure each switch's address and connect the switches together with the expansion cables. Access the on-screen display with a simple keystroke, configure settings such as CPU names and security, and save it in flash memory.

**Operation** Tailor UltraConsole by configuring the level of security that you desire. You can auto-assign security settings to a console station or require users to log into the switch with a user ID and password. The user profile grants access rights to designated computers and controls other characteristics. Use simple keyboard commands to access computers and view system status. Helpful screen messages indicate the status of all connections. To allow maximum versatility, users can connect in four different modes: view, share, control, and private.

**On-screen display** UltraConsole excels with its on-screen display (OSD) technology. The intuitive interface uses pop-up menus to make selections. User-friendly help lines are shown for each item. The interface can be programmed for English, French, German, Spanish, Italian, or Portuguese. You can easily configure CPU names, security, appearance, and many other features.

**Serial devices** The UltraConsole's OSD is so powerful that it is actually a color VT220 terminal emulator. You can configure any computer port to be serial. When you connect to a serial device, you get a 24x80 screen with two status lines. You can access the serial device just as if you were connected with a terminal. Linux serial ports will show directory lists in color.

**Keyboard and Mouse** UltraConsole fully emulates the keyboard and mouse. It works on all major operating systems such as Windows, Solaris, Linux, Unix, SGI, and OSX. Use any combination of PS/2, USB, and Sun including PS/2 wheel and serial mice. USB (PC, Apple, and Sun) and serial mouse are for the computer side only, not on the KVM side. It is compatible with European and Asian languages.

**Flash Memory** To support the latest devices, UltraConsole contains flash memory. We provide free, lifetime firmware upgrades, available from our FTP site. The serial port is used to load new firmware to the UltraConsole.

### Part numbers

Model	CPU ports	RackMount Kit
UC1-1X4U	4	RM-UBnn
UC1-1X8U	8	RM-UBnn
UC1-1X16U	16	RM-UCnn

(/E part number suffix = With expansion card  
(nn=19", 23", or 24")

### Specifications

Dimensions	4/8 port	16.7"W x 4.85"D x 1.75"H 42.4W x 12.3D x 4.4H (cm)
	16 port	16.7"W x 4.85"D x 3.50"H 42.4W x 12.3D x 8.9H (cm)
Weight	4/8 port	4lbs / 1.8kg
	16 port	8lbs / 3.6kg
Connectors	Power	IEC320
	CPU/KVM	DB25F
	Expansion	DB15M/F
	RS232	RJ12 (6-pin)
Power	90 - 240 VAC, auto-switching	
Video bandwidth	1 x 4 / 1 x 8 - 250MHz	
Video sync	HV sync, composite, sync-on-green	
Controls	Power on/off switch	
Indicators	Chassis Power, CPU select, CPU power	
Chassis	Electro galvanized steel, black powder coated	
Environmental	0°-45°C, 5%-80% non-condensing RH	
Approvals	FCC. VCCI. UL. cUL. TUV. CE	



Rear view - 1 x 4, 1 x 8, 1 x 16 with optional expansion cards installed